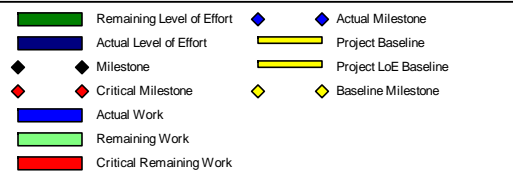
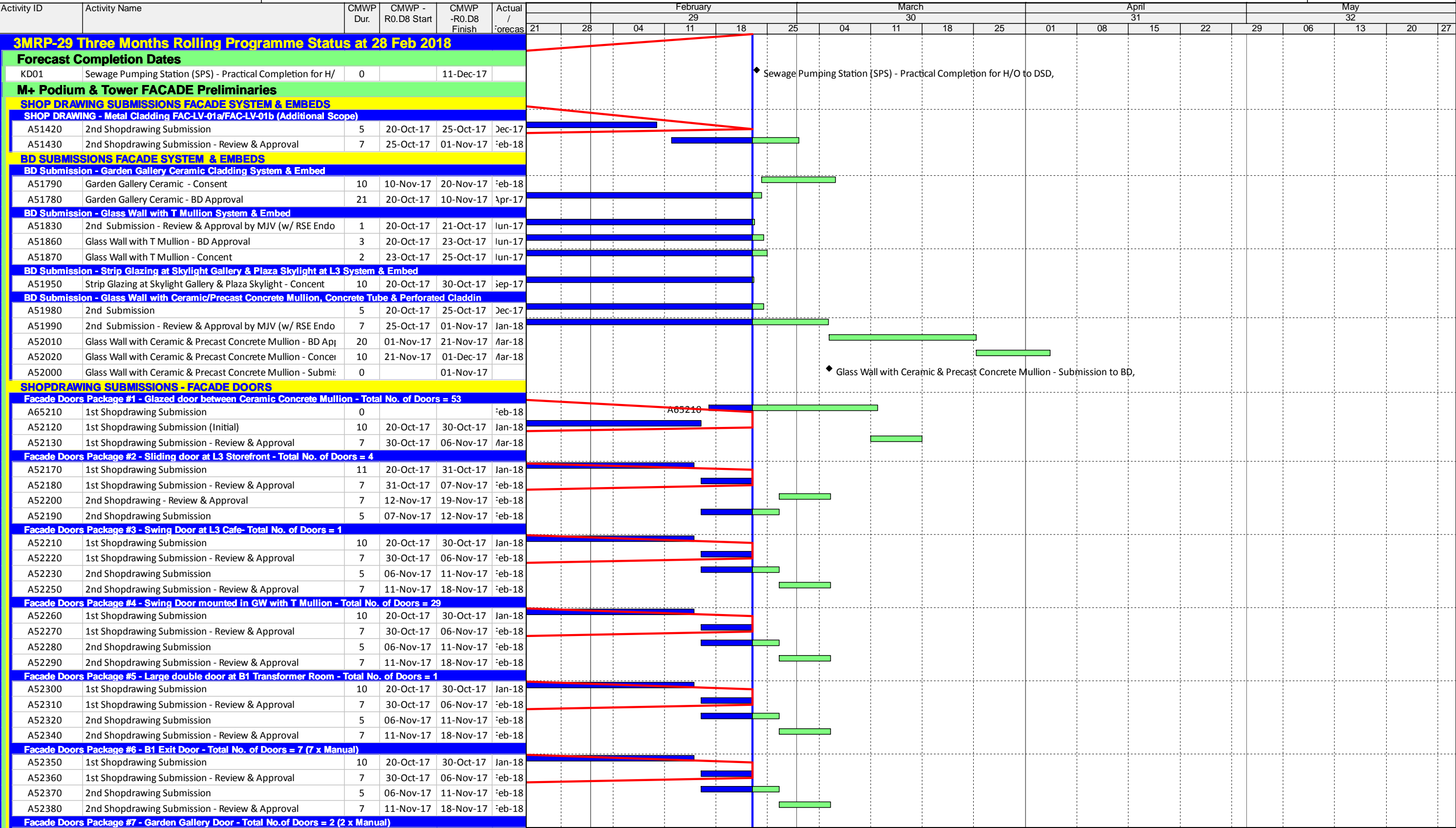


M+ Museum

Three Months Rolling Programme (3MRP) - Mth 29 - 28 February 2018

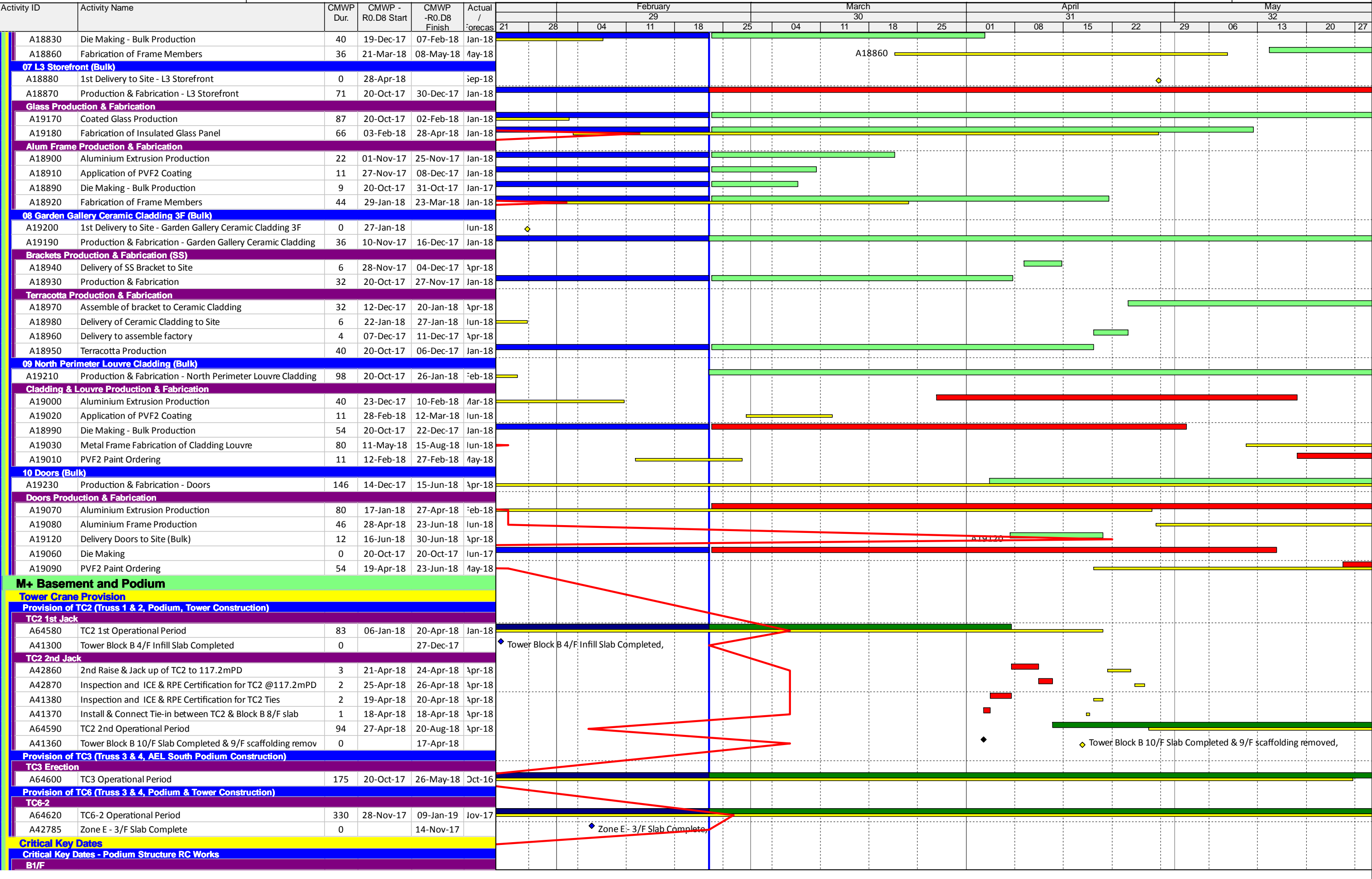


Date	Revision	Checked	Approved
31-Oct-17	3MRP-M25_31 Oct 17	Sam T	Chris Chau / Ricky Lau
30-Nov-17	3MRP-M26_30 Nov 17	Robby Y.	Chris Chau / Ricky Lau
31-Dec-17	3MRP-M27_31 Dec 17	Robby Y.	Chris Chau / Ricky Lau
30-Jan-18	3MRP-M28_30 Jan 18	Robby Y.	Chris Chau / Ricky Lau
28-Feb-18	3MRP-Mth29_28 Feb 18	Robby Y	Chris Chau / Ricky Lau

[illegible]

Activity ID	Activity Name	CMWP Dur.	R0.D8 Start	R0.D8 Finish	Actual / Forecas	February						March			April				May						
						29						30			31				32						
						21	28	04	11	18	25	04	11	18	25	01	08	15	22	29	06	13	20	27	
A10000	IQC Inspection	169	28-Nov-17	27-Jun-18	Mar-18																				
A10010	OQC Inspection	169	06-Dec-17	07-Jul-18	Mar-18																				
02 Podium Facade PC + CW (Bulk)																									
A54480	1st Delivery to Site - Precast Panel for Podium	0	27-Dec-17		Mar-18																				
A54470	Production & Fabrication - Precast Panel for Podium	66	20-Oct-17	25-Dec-17	Dec-16																				
Glass Production & Fabrication																									
A10030	Fabrication of Insulated Glass Panel	155	21-Nov-17	05-May-18	Jan-18																				
A10020	Ordering of Coated Glass	31	20-Oct-17	20-Nov-17	Dec-16																				
CW Glazed Panel Production & Fabrication																									
A10050	Aluminium Extrusion Production	116	15-Jan-18	09-Jun-18	Jan-18																				
A10060	Application of PVF2 Coating	129	26-Jan-18	09-Jul-18	Jan-18																				
A10040	Die Making - Bulk Production	6	08-Jan-18	15-Jan-18	Feb-17																				
A10070	Fabrication & Assemble of Curtain Wall Unit	145	03-Feb-18	08-Jul-18	Jan-18																				
Terracotta Production																									
A10170	1st Lot Arrived (By Ship) Podium Bulk to Precast Concrete Fa	0	02-Feb-18		Feb-18																				
A10160	Delivery of Terracotta to Precast Factory from Italy (by ship)	100	23-Dec-17	02-May-18	Jun-17																				
A10100	Terracotta Production - Podium (Bulk)	130	20-Oct-17	28-Mar-18	Apr-17																				
Precast Concrete Facade																									
A10130	Assemble of Curtain Wall to Precast Facade	116	24-Mar-18	26-Jul-18	Jan-18																				
A10120	Concreting of Precast Concrete	119	07-Mar-18	12-Jul-18	Jan-18																				
A10180	Curing of 1st Lot	6	17-Mar-18	24-Mar-18	Jan-18																				
A10140	Inspection, Packing & Delivery to Site - Podium Facade	116	09-Apr-18	07-Aug-18	Feb-18																				
A10110	Precast Concrete Mould Making	106	02-Feb-18	15-Jun-18	Jun-17																				
A10150	Precast Panel 1st Delivery to Site - Podium	0	27-Dec-17		Mar-18																				
03 GW with T Mullion (Kinked & Straight B1F to GF) (Bulk)																									
A54490	Production & Fabrication - GW with T Mullion (Kinked & Stra	63	12-Nov-17	14-Jan-18	May-18																				
Glass Production & Fabrication																									
A10190	Coated Glass Production	84	13-Nov-17	24-Feb-18	May-18																				
A10300	Delivery of Glass Panel to Site	46	28-Mar-18</																						

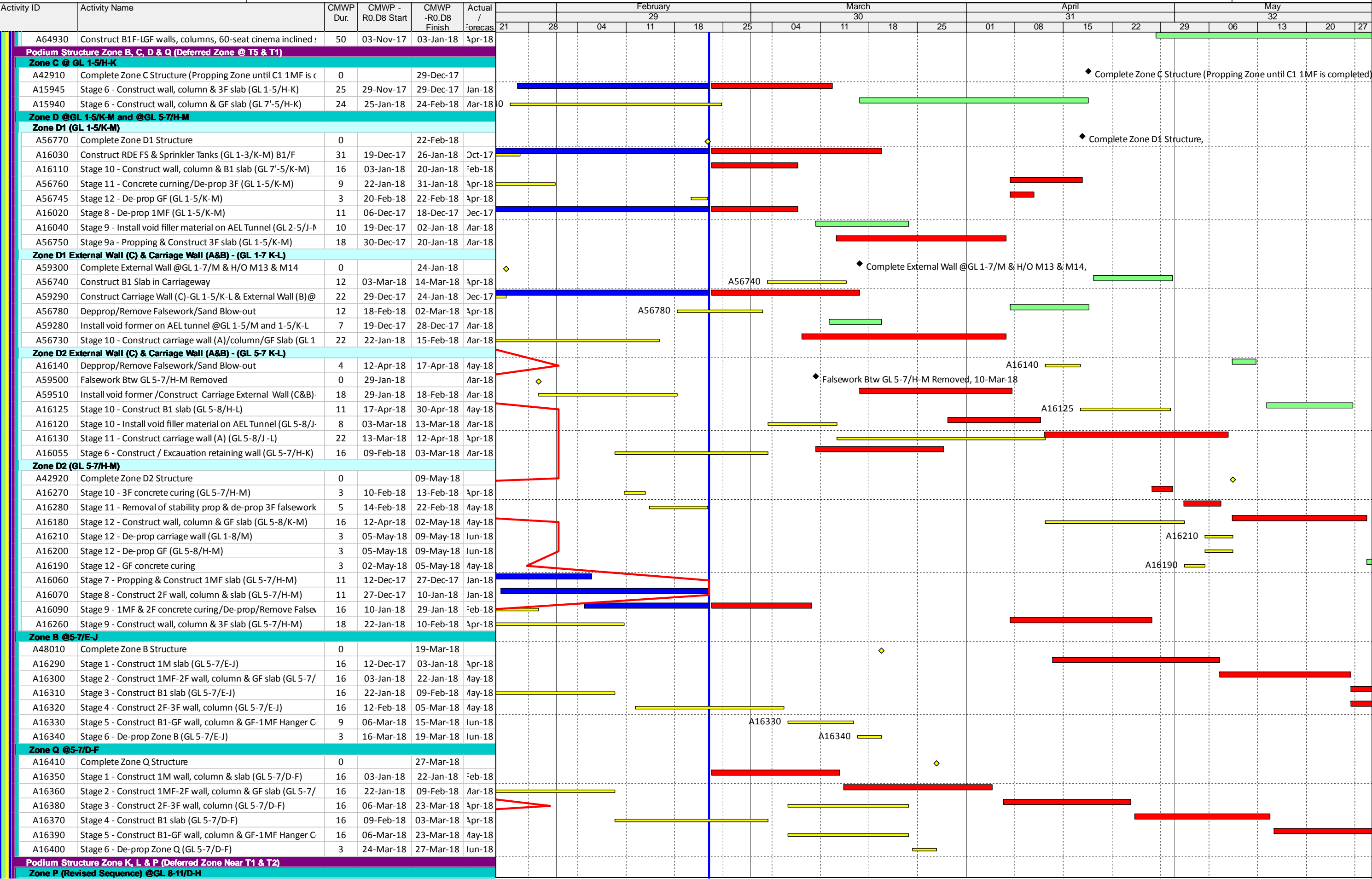
Three Months Rolling Programme (3MRP) - Mth 29 - 28 February 2018



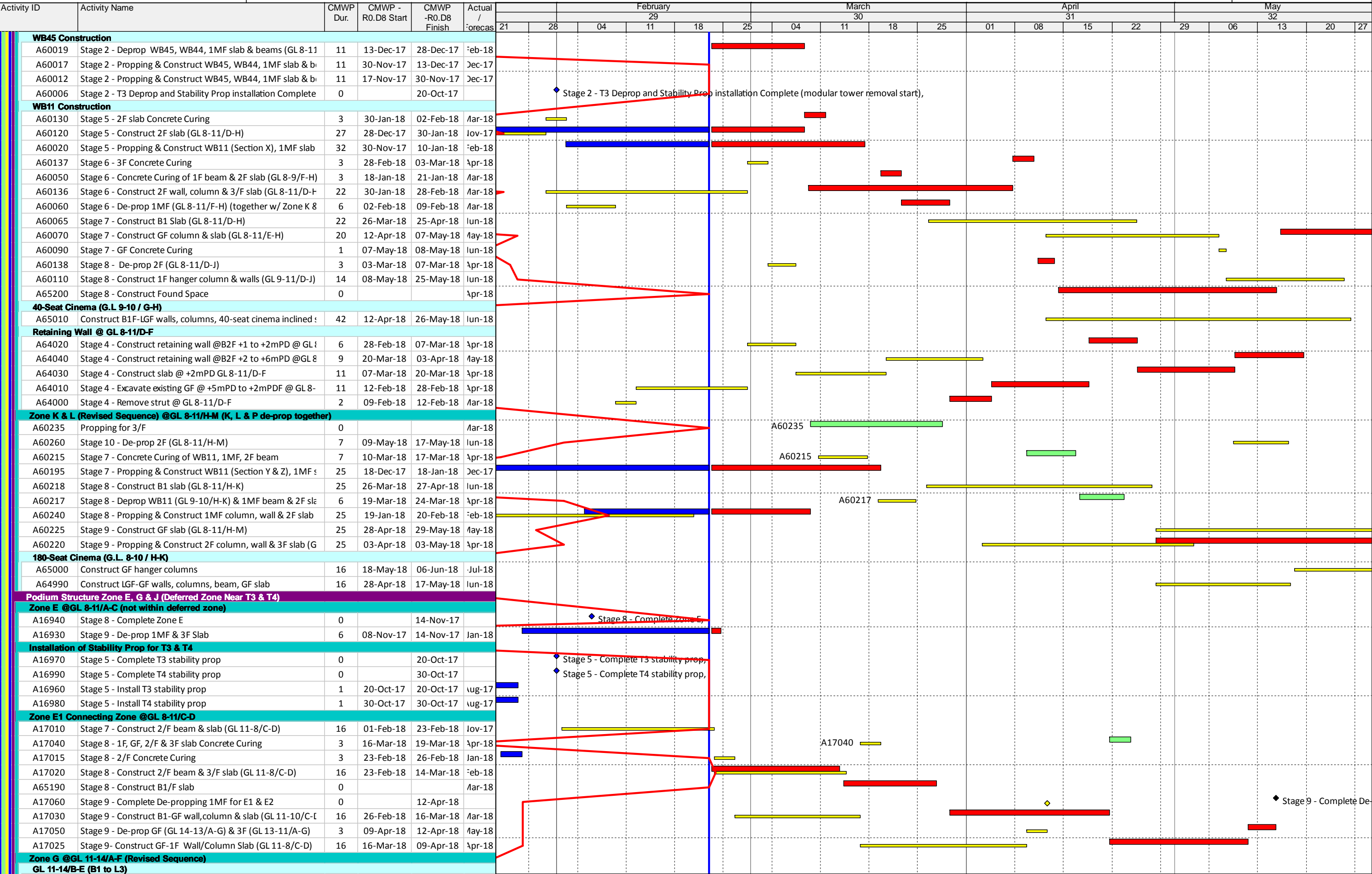
Activity ID	Activity Name	CMWP Dur.	CMWVP - R0.D8 Start	CMWVP -R0.D8 Finish	Actual / Forecas	21	28	04	11	18	25	04	11	18	25	01	08	15	22	29	06	13	20	27
Critical Key Dates - Lifts & Escalators																								
LT10630	LT12 Ready for Permant Use	0		24-Apr-18																				
LT10680	LT14 Ready for Permant Use	0		24-Apr-18																				
LT10860	LT21 & LT22 Ready for Permant Use	0		13-Mar-18																				
Critical Key Dates - M+ Podium External Envelope Works																								
A13250	Complete Zone A - 1M/F Facade Panel	0		28-Feb-18																				
A13270	Complete Zone A - 2/F Facade Panel	0		07-Mar-18																				
A13280	Complete Zone M - 1M/F Facade Panel	0		05-May-18																				
A13290	Complete Zone M - 2/F Facade Panel	0		17-May-18																				
M+ Basement & Podium Structure Construction																								
CSF & RDE Sub-Structure RC Works																								
G/F Level																								
North Zoning @ Portion - R (B1/F to G/F)																								
Portion GFR5b & GFR4 @ GL E-H / 7'-2 (EVA - Part 2)																								
A49450	Remove scaffolds & cleaning	3	20-Oct-17	23-Oct-17	Jan-18																			
Portion GFR2 @ GL F-I' / 6'-7' (EVA - Part N4)																								
A49300	Concrete Curing period EVA - Part N3	3	07-Mar-18	10-Mar-18	Feb-18																			
A49290	Construct beams & slab (G/F) @ GL F'-H' / 5'-1	11	23-Feb-18	07-Mar-18	Jan-18																			
A49310	Remove scaffolds & cleaning	3	12-Mar-18	14-Mar-18	Feb-18																			
Portion GFR1 @ GL I'-J' / 6'-7' (EVA - Part N5)																								
A49275	Complete EVA Zone R @ GL A-J' / 6'-2	0		28-Mar-18																				
A49260	Concrete Curing period EVA - Part N5	3	22-Mar-18	25-Mar-18	Mar-18																			
A49250	Construct beams & slab (G/F) @ GL I'-J' / 5'-1	16	03-Mar-18	22-Mar-18	Feb-18																			
A49240	Construct Columns & Walls & Cols B1/F to G/F @ GL I'-J' / 5'	3	20-Oct-17	23-Oct-17	Feb-17																			
A49270	Remove scaffolds & cleaning	3	26-Mar-18	28-Mar-18	Mar-18																			
North Zoning @ Portion - S (B1/F to G/F)																								
Portion GFS1 & GFS2 @ GL A / 6'-2 (EVA - Part 3)																								
A64090	Complete EVA Zone S @ GL A / 7'-2 for G/F Access	0		08-Nov-17																				
A64080	Remove scaffolds & cleaning	3	06-Nov-17	08-Nov-17	Feb-18																			
M+ Mega Truss Site Construction																								
Site Construction of Truss 1																								
T1 Steel Erection (incl. Modular Towers & Working Platform)																								
Temporary Supports & Modular Towers																								
MT5160	Install tie to T1 bottom chord for temporary support towers	1	28-Jun-17	28-Jun-17	May-17																			
RC Works East Core Wall (incl. to +28.3mPD for T5-N04A & T5-N04B)																								
A37555	Construct 4/F Infill slab at East Core Wall (4/F slab)	6	20-Oct-17	26-Oct-17	Sep-17																			
Mega Truss Infill Construction (Zone F @ GL 7-8/D-M)																								
Removal of Modular Towers																								
Truss 1&2 GL7-8/M-J																								
A17965	Removal of T1-T2 Middle-SideTowers & Bracing @ GL M-L	2	25-Oct-17	26-Oct-17	Feb-18																			
Truss Deprop & Removal of T5 Falseworks																								
Dismantle of T5 Falseworks System (by TC2)																								
A60370	Dismantle scaffold platform	4	01-Nov-17	04-Nov-17	Mar-18																			
A60360	Remove tie beams & working platform between 9M trusses	5	25-Oct-17	31-Oct-17	Feb-18																			
Truss Deprop & Removal of T3 Falseworks																								
Dismantle of T3 Falsework System (by TC2 & TC3)																								
A60460	Remove bracing tower @C85 & C86	7	03-Nov-17	10-Nov-17	Feb-18																			
Truss Deprop & Removal of T1 & T2 Falseworks																								
Depropping of Truss 1																								
A60880	Jack up ram jacks, cut & lower support by 50mm	3	21-Oct-17	25-Oct-17	Feb-18																			
A60870	Setup depropping system @T1	3	20-Oct-17	23-Oct-17	Feb-18																			
A60890	Slowly reduce jack till truss takes full self-weight, rests on ne	1	24-Oct-17	25-Oct-17	Feb-18																			
Depropping of Truss 2																								
A60560	Jack up ram jacks, cut & lower support by 50mm	3	23-Oct-17	25-Oct-17	Feb-18																			
A60570	Load ram jack & slowly reduce jack till truss takes full self-wr	1	24-Oct-17	24-Oct-17	Feb-18																			
A60550	Setup depropping system @T2	2	20-Oct-17	21-Oct-17	Sep-17																			
Dismantle of T1 & T2 Falsework System (13-Jun-2017 update)																								
A60640	Erect levelling scaffold platform	5	18-Nov-17	24-Nov-17	Mar-18																			
A60650	Lower down 9/18M trusses (6 nos.)	1	24-Nov-17	25-Nov-17	Mar-18																			
A60660	Remove 9/18M	12	25-Nov-17	09-Dec-17	Mar-18																			
A60630	Remove all PERI Tower underneath T1 & T2	9	10-Nov-17	21-Nov-17	Dec-17																			
Truss Deprop & Removal of T4 Falseworks																								
Depropping of Truss 4																								
A60480	Jack up ram jacks cut & lower support by 50mm	3	24-Oct-17	26-Oct-17	Feb-18																			
A60010	Setup depropping system @T4	3	20-Oct-17	23-Oct-17	Feb-18																			

[illegible]

Three Months Rolling Programme (3MRP) - Mth 29 - 28 February 2018

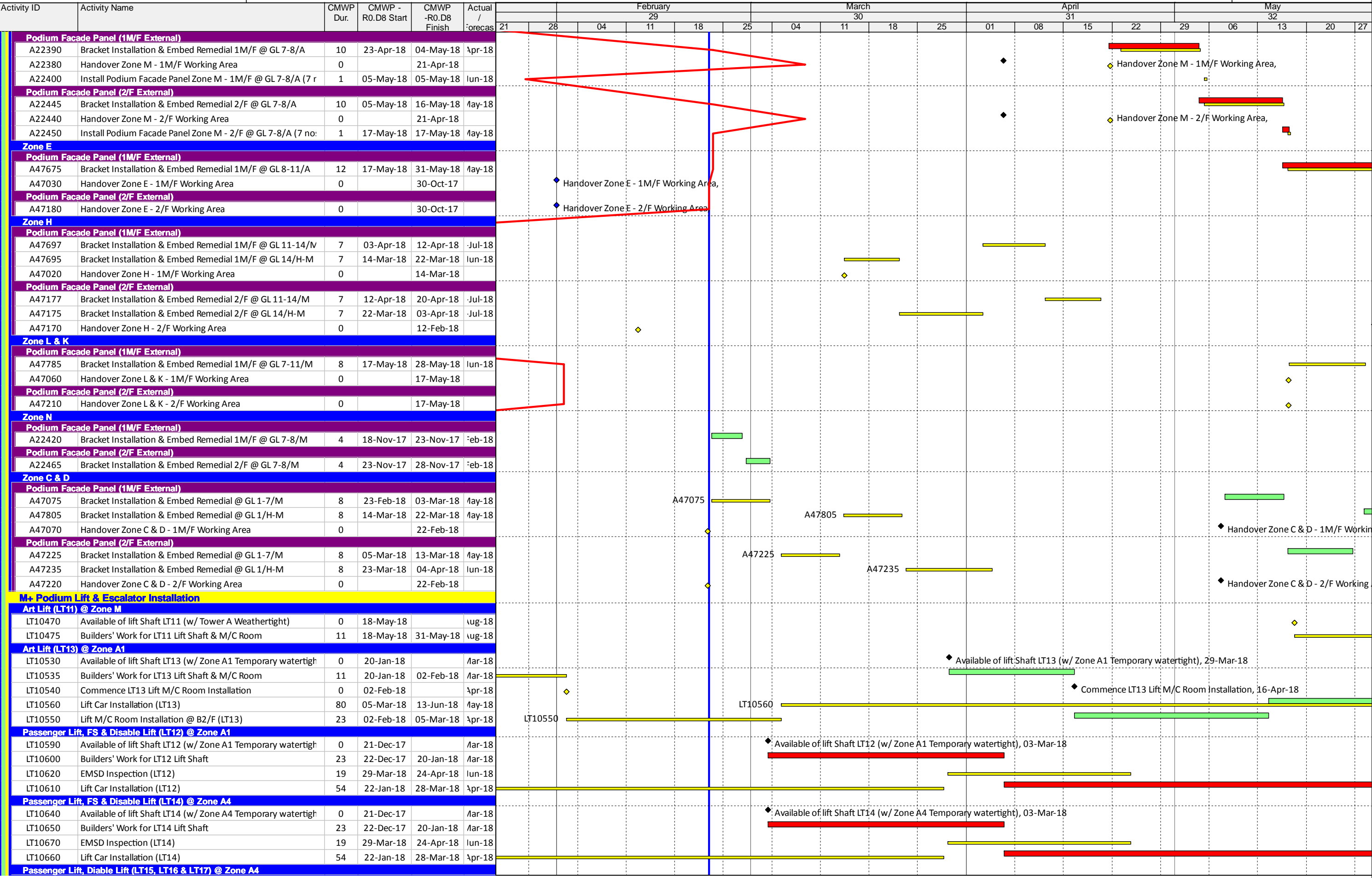


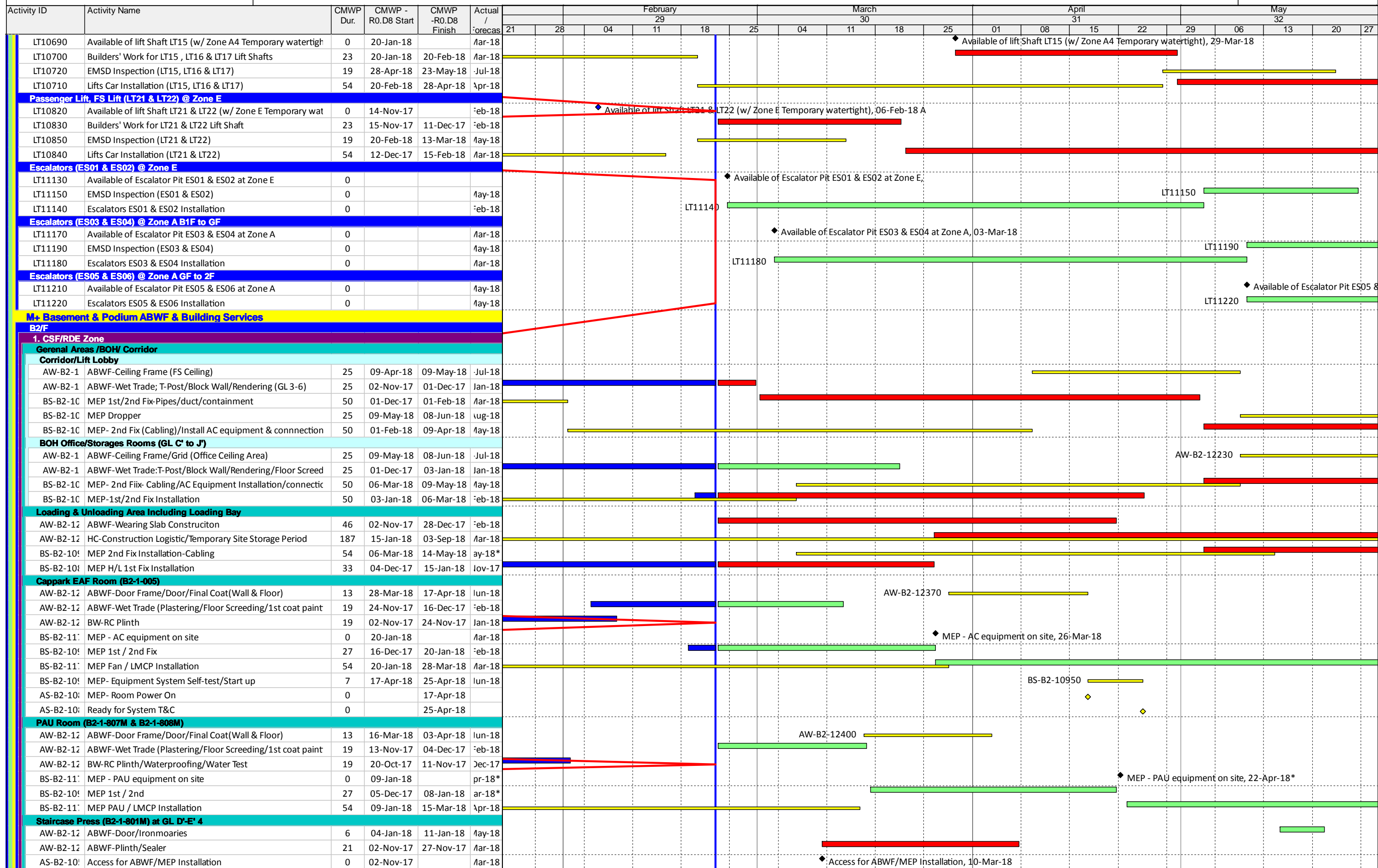
Three Months Rolling Programme (3MRP) - Mth 29 - 28 February 2018



[illegible]

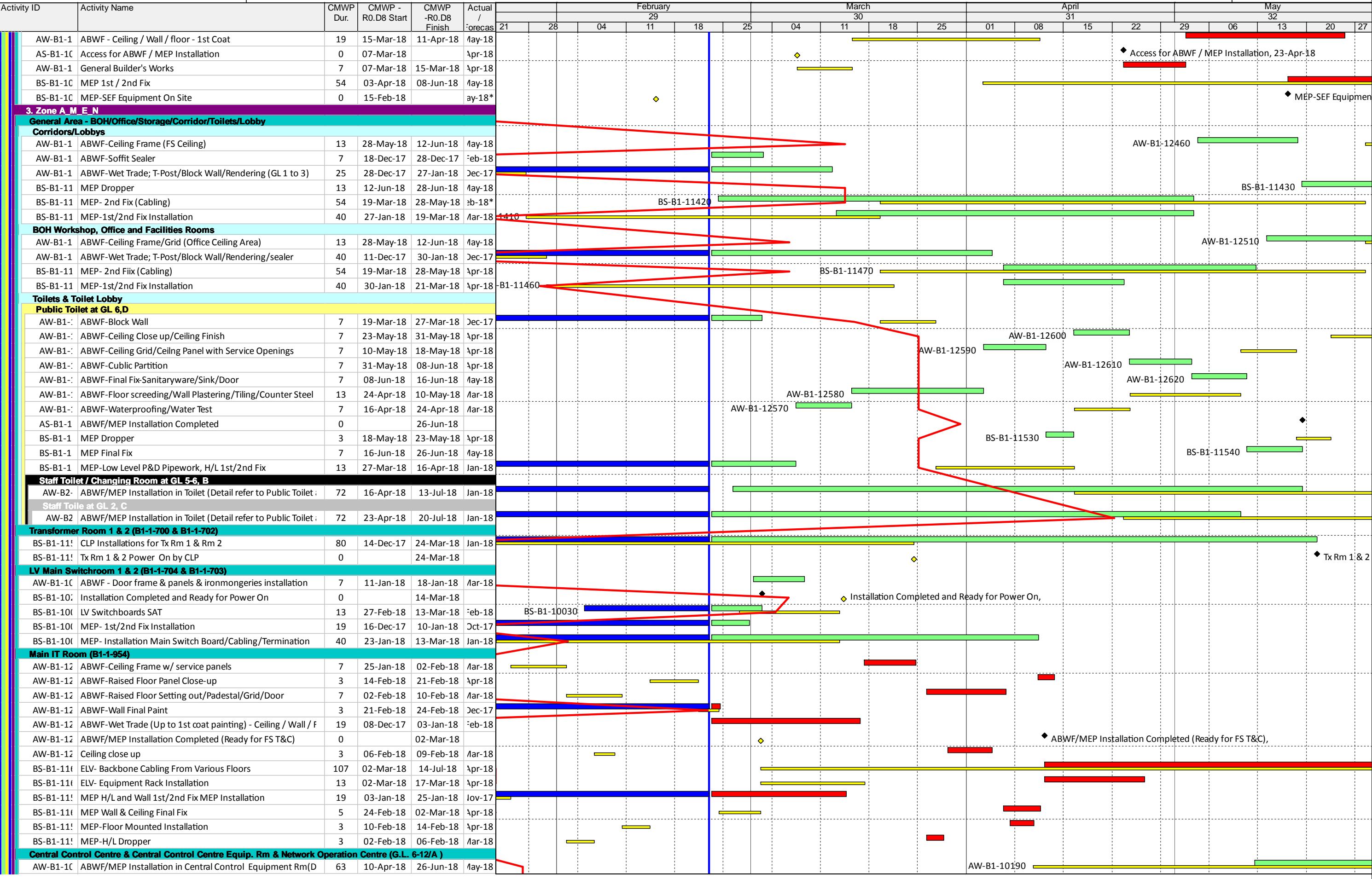
Three Months Rolling Programme (3MRP) - Mth 29 - 28 February 2018





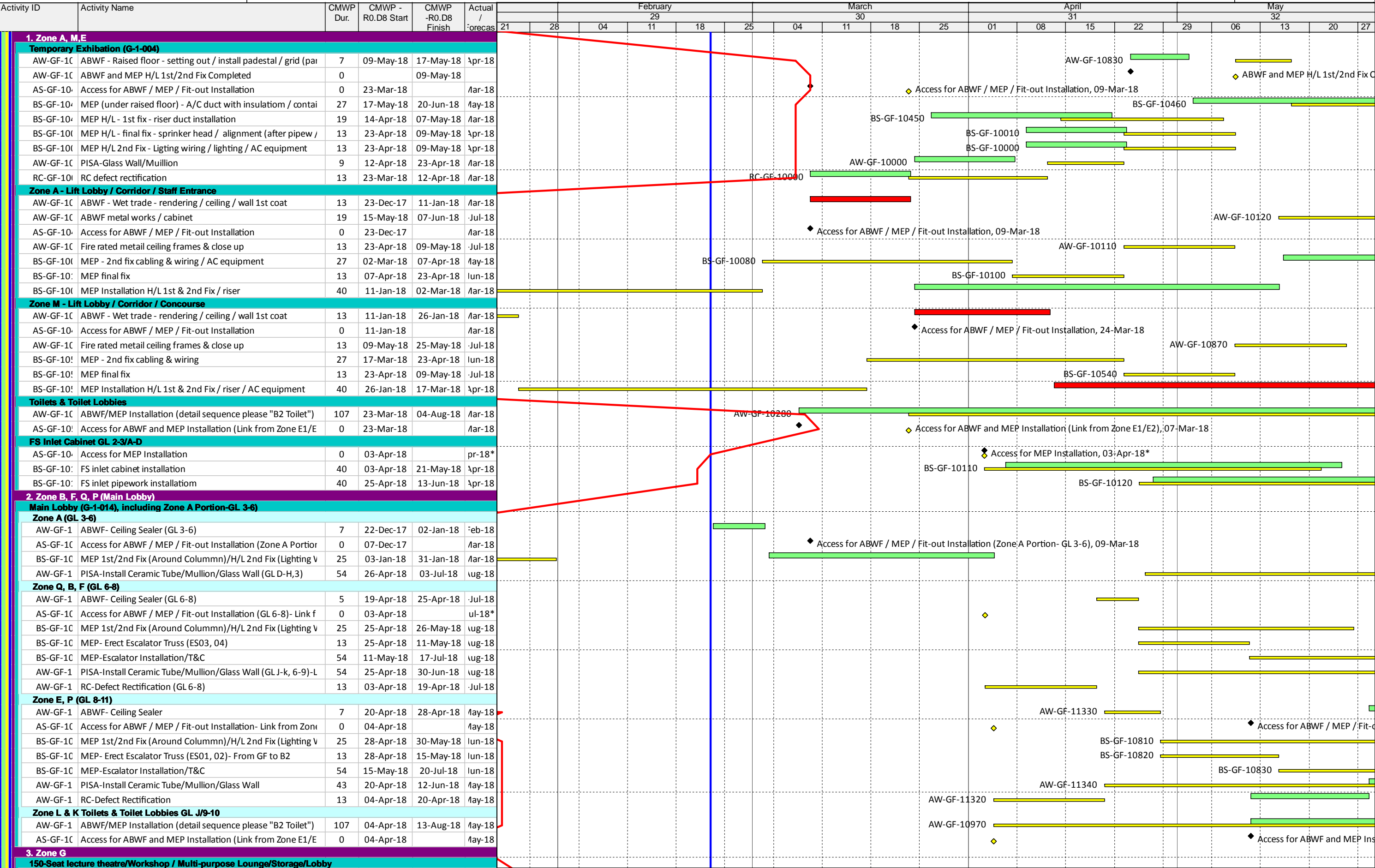
[illegible]

Three Months Rolling Programme (3MRP) - Mth 29 - 28 February 2018

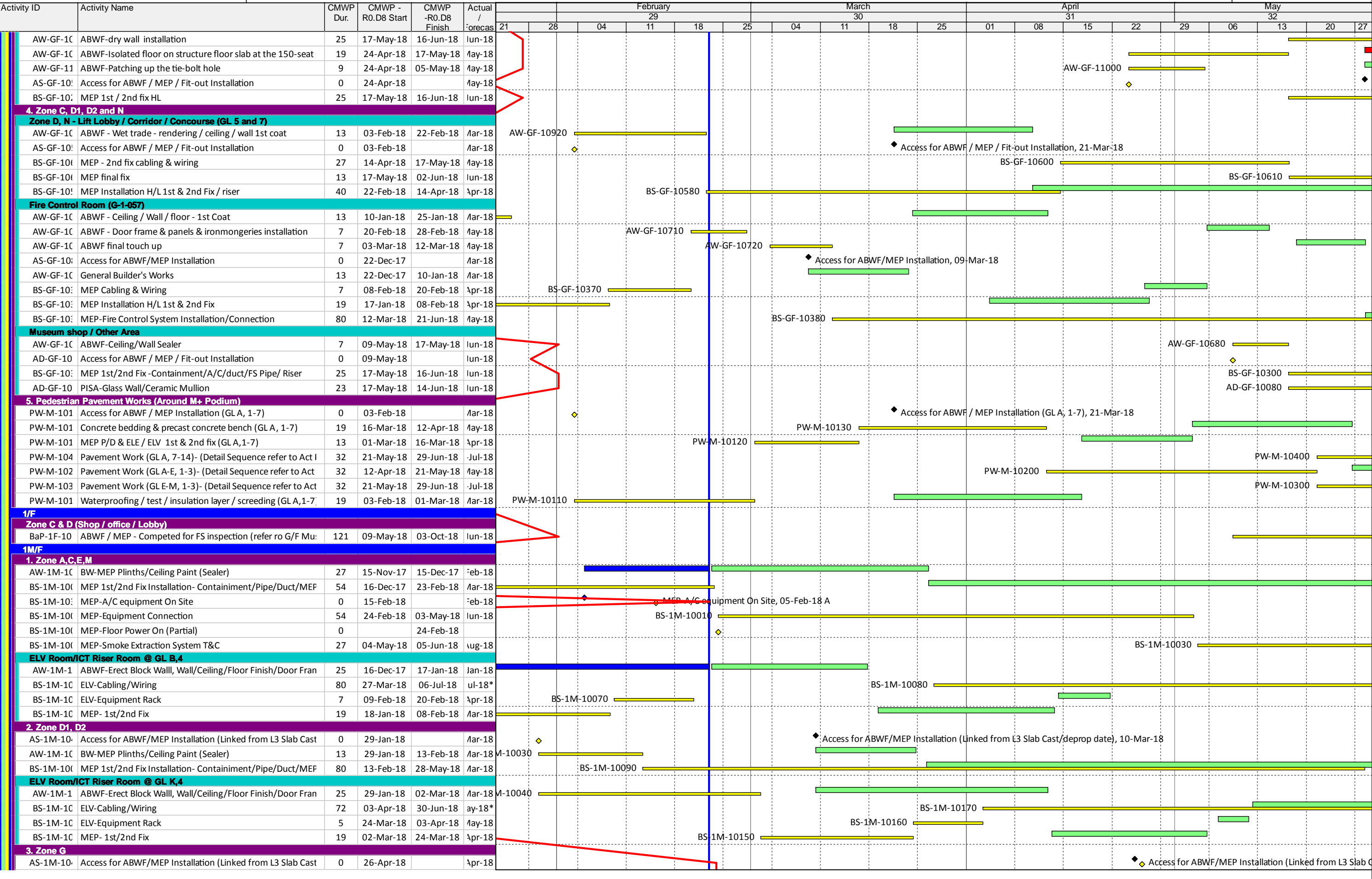


Activity ID	Activity Name	CMWP Dur.	CMWP - R0.D8 Start	CMWP -R0.D8 Finish	Actual / Forecast	21	28	04	11	18	25	04	11	18	25	01	08	15	22	29	06	13	20	27
AW-B1-1C	ABWF/MEP Installation in Central Control Centre (Detail refe	63	29-Mar-18	19-Jun-18	May-18										AW-B1-10180									
AW-B1-1C	ABWF/MEP Installation in Network Operation Centre (Detail	63	18-Apr-18	04-Jul-18	May-18												AW-B1-10200							
AS-B1-10I	Access for ABWF/MEP Installation	0	29-Mar-18		May-18																			
Cafe kitchen (B1-1-044) GL 10-12/A-E & Catering Kitchen (G.L. 10 / B)																								
AW-B1-1C	ABWF-Waterproofing & floor screeding/Rendering/Tile	25	04-May-18	04-Jun-18	May-18										AW-B1-10230									
AS-B1-10I	Access for ABWF/MEP Installation	0	29-Mar-18		Feb-18																			
BS-B1-10I	KIT-Installation Kitchen Equipment	38	04-Jun-18	20-Jul-18	Apr-18																			
BS-B1-10I	MEP 1st / 2nd fix	19	29-Mar-18	25-Apr-18	Feb-18																			
BS-B1-11I	MEP- Install Floor Drain/Wall Concealed Pipework	7	25-Apr-18	04-May-18	Mar-18																			
BS-B1-11I	MEP-2nd fix-connection to Kitchen Equipment/Cabling	38	20-Jun-18	03-Aug-18	May-18																			
5. Zone C D1																								
BOH Corridor along G.L.J																								
AW-B1-12	ABWF-Sealer paint	3	07-Mar-18	10-Mar-18	Apr-18																			
AS-B1-10I	Access for ABWF/MEP Installation	0	07-Mar-18		Apr-18																			
BS-B1-11I	MEP 1stFix-Main Chilled Water Header Installation/Connect	54	10-Mar-18	18-May-18	Apr-18																			
BS-B1-11I	MEP-1st/2nd Fix-PD/FS pipe/Containment/Wiring/CHW Pipe	54	18-May-18	24-Jul-18	Jul-18																			
BS-B1-11I	Ready for System Flushing	0		18-May-18																				
ICT Riser Room																								
AW-B1-12	ABWF-Door/Iromongaries	3	26-Mar-18	29-Mar-18	May-18																			
AW-B1-12	ABWF-Sealer paint	3	07-Mar-18	10-Mar-18	Apr-18																			
AS-B1-10I	Access for ABWF/MEP Installation	0	07-Mar-18		Apr-18																			
BS-B1-11I	MEP 1st/2nd Fix	13	10-Mar-18	26-Mar-18	Apr-18																			
AS-B1-10I	Ready for DC Access	0		29-Mar-18																				
ELV Room																								
AW-B1-12	ABWF Sealer paint	3	07-Mar-18	10-Mar-18	Apr-18																			
AW-B1-12	ABWF-Door / Ironmongaries	3	26-Mar-18	29-Mar-18	May-18																			
AS-B1-10I	Access for ABWF/MEP Installation	0	07-Mar-18		Apr-18																			
BS-B1-11I	ELV- Equipment Ract / Cabling / Connection	27	29-Mar-18	05-May-18	May-18																			
BS-B1-11I	MEP 1st/2nd Fix	13	10-Mar-18	26-Mar-18	Apr-18																			
AS-B1-11I	Ready for ELV system T&C	0		05-May-18																				
7. Zone H																								
Transformer Room C																								
AW-B1-13	ABWF - Ceiling / Wall / floor - 1st Coat/ Installation of cable	19	06-Nov-17	27-Nov-17	Mar-18																			
AW-B1-13	ABWF - Door / Louvre Installation	7	13-Dec-17	21-Dec-17	Feb-18																			
AW-B1-13	ABWF - Dust free sealer on floor	7	14-Dec-17	22-Dec-17	Feb-18																			
BS-B1-12I	CLP Installation Period	80	18-Jan-18	30-Apr-18	Mar-18																			
BS-B1-12I	CLP Power On	0		30-Apr-18																				
AW-B1-13	General Builder's Works, including floor screeding	13	20-Oct-17	04-Nov-17	Feb-18																			
AW-B1-13	H/O Tx Rms to CLP	0		18-Jan-18																				
AW-B1-13	Inspection by CLP	20	22-Dec-17	18-Jan-18	Mar-18																			
LG/F																								
CSF/RDE Zone																								
Carpark Area																								
AW-LG-10	ABWF - Wet Trade / Block wall / rendering / Ceiling / Floor	19	15-Jan-18	06-Feb-18	Feb-18																			
AS-LG-10I	Access for ABWF and MEP Installation	0	15-Jan-18		Feb-18																			
BaP-LG-1C	HC-Construction Logistic/Temporary Site Storage Period	143	24-Mar-18	17-Sep-18	Apr-18																			
BS-LG-10C	MEP 2nd Fix Installation-Cabling	54	24-Mar-18	02-Jun-18	Apr-18																			
BS-LG-10C	MEP H/L 1st Fix Installation	50	22-Jan-18	24-Mar-18	Nov-17																			
LV Switch Room (LG-3-700R) GL 4'-5"/H'-J'																								
BS-LG-10C	LV Switch Room Installation (Refer to B1/F LV Switch Room)	73	15-Jan-18	18-Apr-18	Jan-18																			
BS-LG-10C	Ready for Power On	0		18-Apr-18																				
RDE Stair Pressurization (LG-3-800R)																								
AW-LG-10	ABWF - Ceiling / Wall / floor - 1st Coat	19	23-Jan-18	14-Feb-18	Mar-18																			
AW-LG-10	ABWF - Door frame & panels & ironmongeries installation	7	18-Apr-18	26-Apr-18	Jun-18																			
AW-LG-10	ABWF final touch up/Door	7	26-Apr-18	05-May-18	Jun-18																			
AS-LG-10I	Access for ABWF/MEP Installation	0	03-Jan-18		Mar-18																			
AW-LG-10	BW-Plinth	7	15-Jan-18	23-Jan-18	Mar-18																			
BS-LG-10C	MEP 1st/2nd Fix Installation	54	06-Feb-18	18-Apr-18	Apr-18																			
BS-LG-10I	MEP Stair pressuasion installation	54	18-Apr-18	23-Jun-18	Jun-18																			
BS-B2-11I	MEP-Stair pressurization equipment on site	0	18-Apr-18		Jun-18*																			
G/F																								

Three Months Rolling Programme (3MRP) - Mth 29 - 28 February 2018

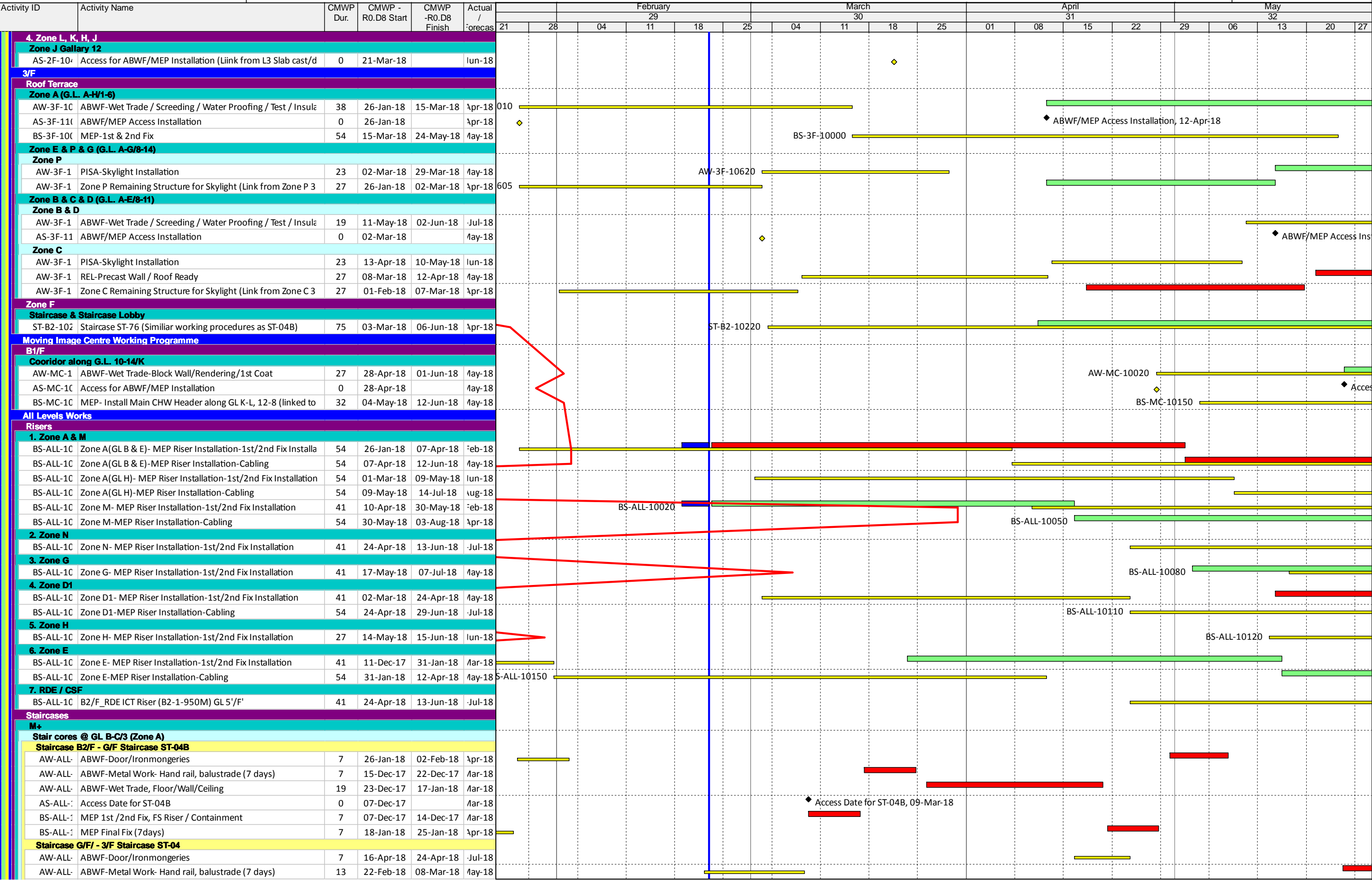


Three Months Rolling Programme (3MRP) - Mth 29 - 28 February 2018



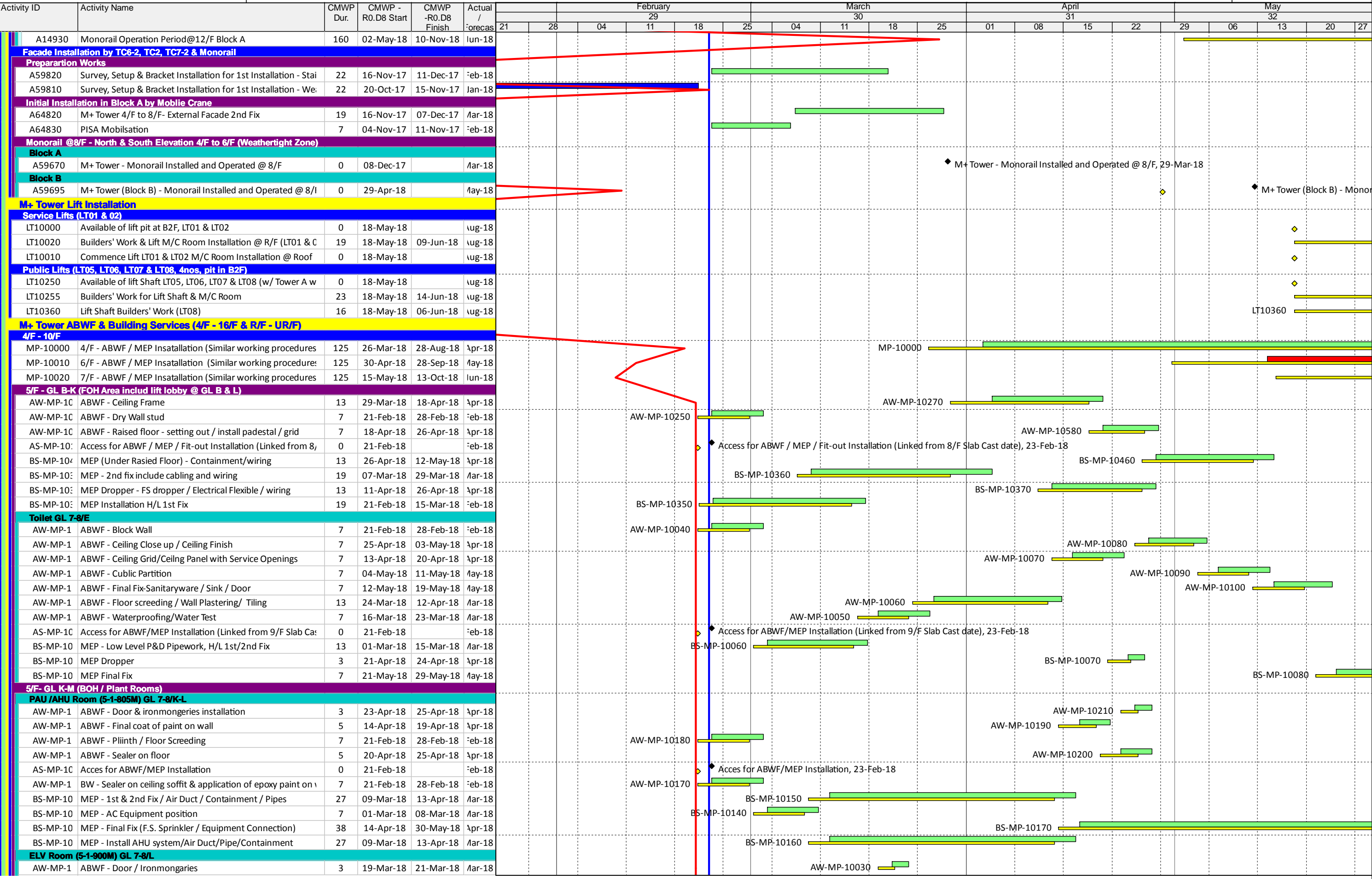
[illegible]

Three Months Rolling Programme (3MRP) - Mth 29 - 28 February 2018



[illegible]

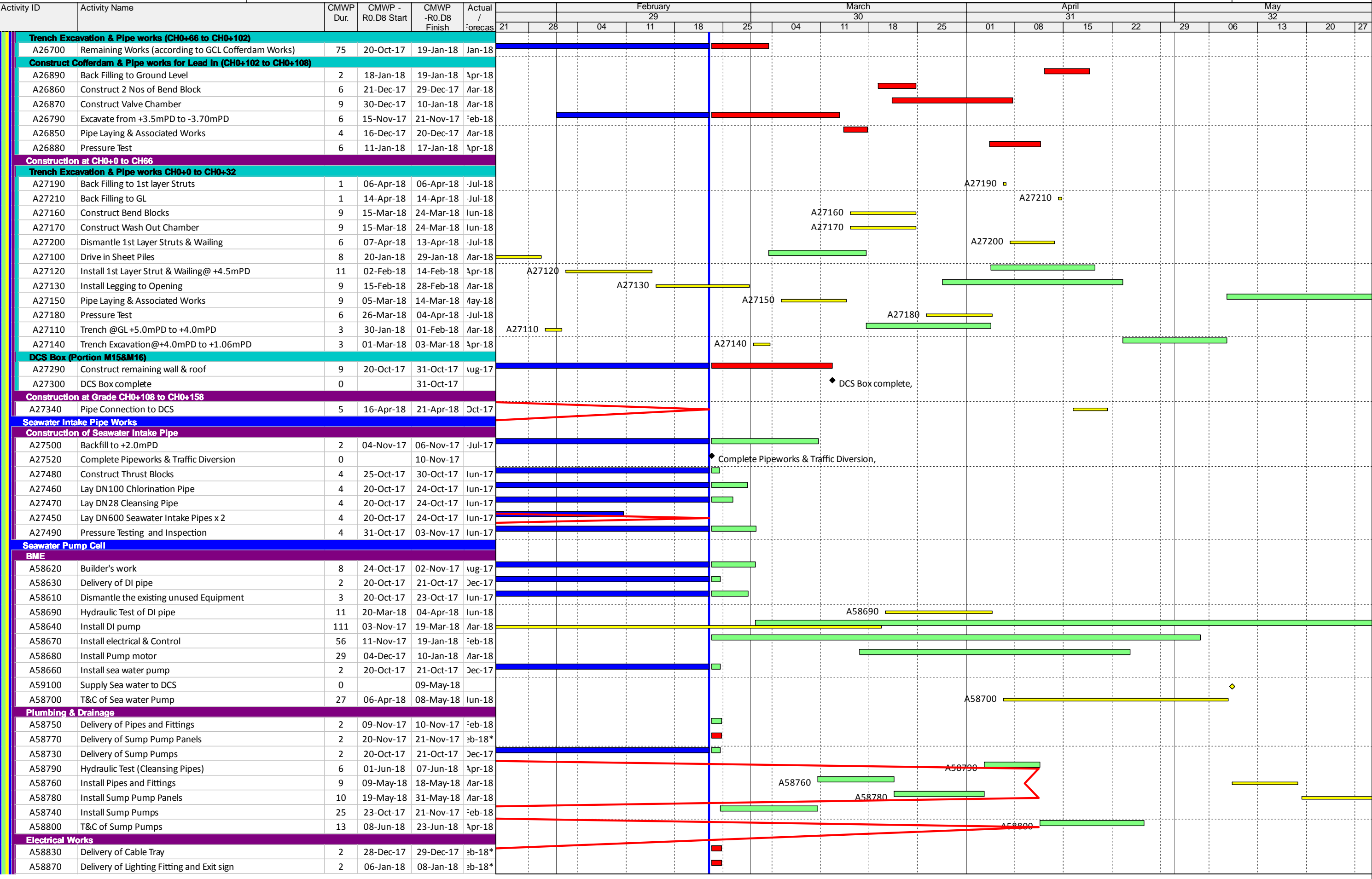
Three Months Rolling Programme (3MRP) - Mth 29 - 28 February 2018



[illegible]

[illegible]

Three Months Rolling Programme (3MRP) - Mth 29 - 28 February 2018



Activity ID	Activity Name	CMWP Dur.	CMWP - R0.D8 Start	CMWP -R0.D8 Finish	Actual / Forecast	February 29					March 30					April 31				May 32			
						21	28	04	11	18	25	04	11	18	25	01	08	15	22	29	06	13	20
A58860	Delivery of MCB Board	2	06-Jan-18	08-Jan-18	Feb-18*																		
A58820	Delivery of Power Cable	2	28-Dec-17	29-Dec-17	Feb-18*																		
A58810	Dismantle the existing unused Equipment	8	25-Jun-18	04-Jul-18	Feb-18					A58810													
A58840	Install Cable Tray and Power Cable	8	05-Jul-18	13-Jul-18	Mar-18						A58840												
A58890	Install Lighting Fitting and Wiring Accessories	10	14-Jul-18	25-Jul-18	Mar-18							A58890											
A58880	Install MCB Board	10	14-Jul-18	25-Jul-18	Mar-18							A58880											
A58850	Install Surface Conduit and wiring Cable	8	05-Jul-18	13-Jul-18	Mar-18						A58850												
A58900	T&C of Electrical Works	8	26-Jul-18	03-Aug-18	Mar-18								A58900										
Fire Service Works																							
A58920	Deliver and Install heat detection system	5	30-Jan-18	03-Feb-18	Feb-18*																		
A58910	Dismantle the existing unused Equipment	4	04-Aug-18	08-Aug-18	Apr-18									A58910									
A58930	T&C of heat detection system	4	09-Aug-18	13-Aug-18	Apr-18										A58930								
Demolition of CSO Office																							
A27760	CSO Office relocation	0		02-Jan-18																			
A27770	Demolish Existing CSO Office	32	02-Jan-18	08-Feb-18	Feb-18																		
Sewerage																							
Sewerage Interface with PIW & F2 Contractor																							
Sewerage at Austin Road West (Portion L08)																							
A27860	Back fill & Reinstate pavement / Reinstate Planter	8	08-Dec-17	16-Dec-17	Feb-18																		
A27870	HCC connect DN375 to F1.2	1	18-Dec-17	18-Dec-17	Jan-18																		
A27790	PIW Implement TTMS & Allow Access to Manhole F1.2 to H	0	20-Oct-17		Feb-18*																		
A27850	Pressure Test	3	05-Dec-17	07-Dec-17	Dec-17																		
Sewerage at Portion M01, Gridline A / 3-14																							
A27940	HCC grant access to Park Contractor for SM100 constructor	0	22-Nov-17		May-18																		
MH F2.1D to MH F2.1C																							
A28140	Backfill to ground level	3	08-Nov-17	10-Nov-17	Jan-18																		
A28100	Construct Manhole F2.1D	9	24-Oct-17	03-Nov-17	Jan-18																		
A28110	Lay Sewerage Pipe DN375 between MH F2.1D to F2.1C (Ap	4	24-Oct-17	27-Oct-17	Jan-18																		
A28130	Pressure Test	3	04-Nov-17	07-Nov-17	Jan-18																		
MH F2.1E to MH F2.1D																							
A28190	Backfill to ground level	3	18-Nov-17	21-Nov-17	May-18																		
A28160	Construct Manholes F2.1E	6	08-Nov-17	14-Nov-17	Mar-18																		
A28170	Lay Sewerage Pipe between MH F2.1E to F2.1D (DN375mm	6	08-Nov-17	14-Nov-17	Mar-18																		
A28150	Manhole & Trench Excavation for Sewerage Pipe between M	3	04-Nov-17	07-Nov-17	Jan-18																		
A28180	Pressure Test	3	15-Nov-17	17-Nov-17	May-18																		
Sewerage at Portion M05 & M27																							
MH SM21A to Interface MH SM13																							
Construction																							
A28510	Backfill to formation level	5	28-Dec-17	03-Jan-18	Feb-18																		
A28470	Remaining works between SM21A to SM13	16	23-Nov-17	11-Dec-17	Feb-18*																		
Storm Drainage																							
Storm Drain DN750 along Gridline A/3-11 (MH S2.4 to S2.6)																							
A28560	Backfill to existing ground level	5	21-Nov-17	27-Nov-17	Nov-17																		
A28530	Construct Manhole S2.4 & S2.6	11	20-Oct-17	02-Nov-17	Oct-17																		
A28540	Lay DN700 pipe from Manholes S2.4 to S2.6 (Approx. 78m)	13	02-Nov-17	17-Nov-17	Nov-17																		
A28550	Pressure Test	3	17-Nov-17	21-Nov-17	Nov-17																		
Storm Drain DN1050 along Gridline A/11-14 (MH S2.6 to S2.6A to S2.7 to S2.8)																							
A28610	Backfill to existing ground level	5	19-Dec-17	27-Dec-17	Dec-17																		
A28580	Construct Manhole S2.6a, S2.7 & S2.8	11	24-Nov-17	07-Dec-17	Dec-17																		
A28570	Excavate to formation level & install shoring	6	17-Nov-17	24-Nov-17	Nov-17																		
A28600	Pressure Test	3	15-Dec-17	19-Dec-17	Dec-17																		
Storm Drain DN1050 along Gridline A/14 (MH S2.8 to S2.9a to SE2.7)																							
A28670	Backfill to existing ground level	5	01-Feb-18	07-Feb-18	Apr-18		A28670																
A28640	Construct Manhole S2.9a & SE2.7	11	08-Jan-18	20-Jan-18	Mar-18																		
A28630	Excavate to formation level & install shoring	6	30-Dec-17	08-Jan-18	Mar-18																		
A28620	Excavate Trial Trench for existing underground utilities	11	15-Dec-17	30-Dec-17	Feb-18																		
A28650	Lay DN1050 pipe from Manholes S2.8 to S2.9a to SE2.7 (Ap	7	20-Jan-18	29-Jan-18	Mar-18																		
A28660	Pressure Test	3	29-Jan-18	01-Feb-18	Apr-18		A28660																
Storm Drain DN600 along Gridline G-M/14 (MH S2.12 to S2.13)																							
A28870	Backfill to existing ground level	3	29-Sep-17	03-Oct-17	Mar-17																		
A28850	Construct Manhole S2.12 & S2.13	11	09-Sep-17	21-Sep-17	Jul-17																		
A28840	Excavate to formation level	5	02-Sep-17	08-Sep-17	Jul-17																		

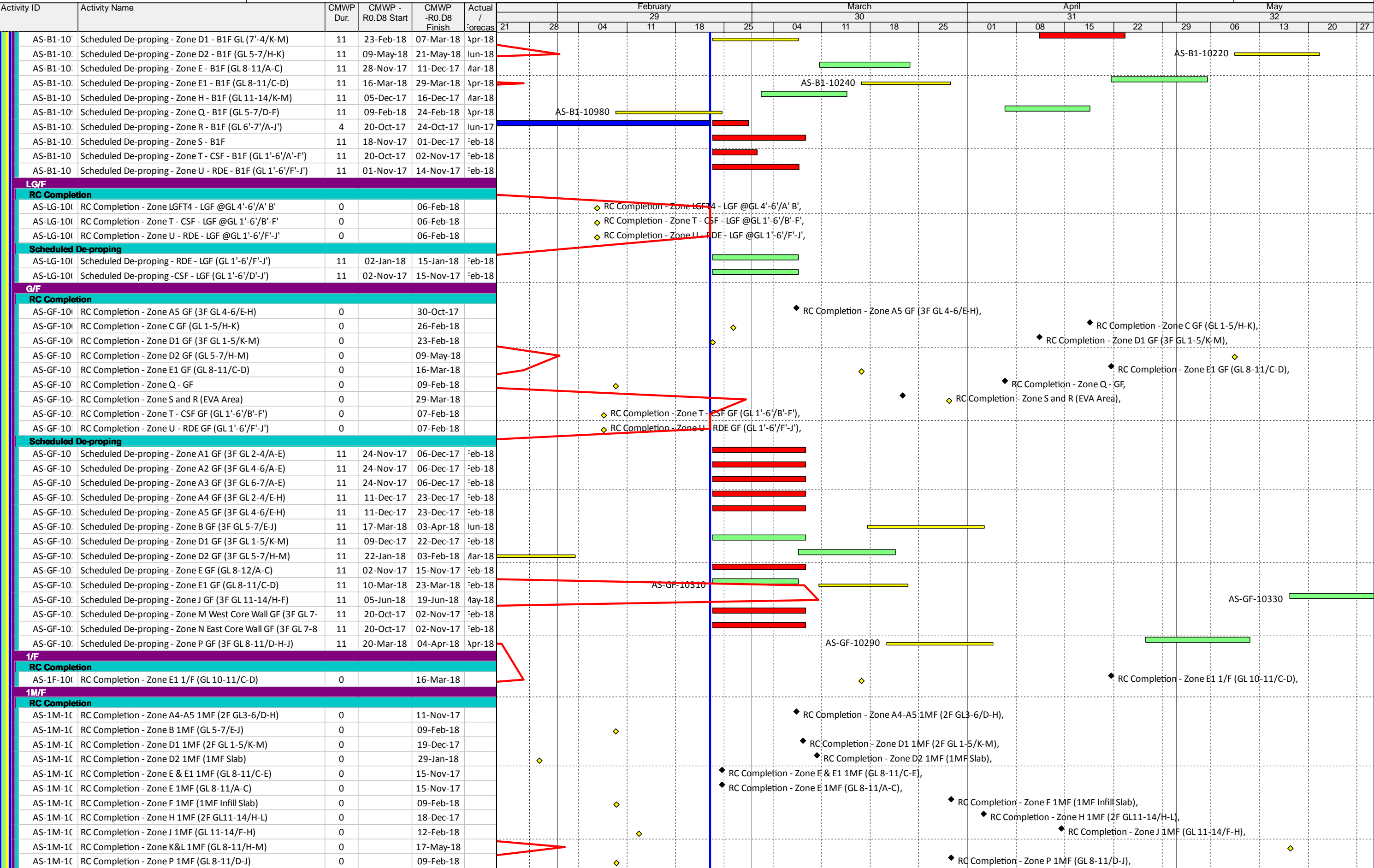
Activity ID	Activity Name	CMWP Dur.	CMWP - R0.D8 Start	CMWP -R0.D8 Finish	Actual / Forecas	February					March					April				May					
						21	28	04	11	18	25	04	11	18	25	01	08	15	22	29	06	13	20	27	
A28830	Excavate Trial Trench	11	30-Oct-17	10-Nov-17	Jul-17																				
A28860	Lay DN450 pipe from Manholes S2.13 to S2.12 (Approx.50	4	23-Sep-17	28-Sep-17	Apr-17																				
Storm Drain at Gridline M/13																									
A28900	Backfill to existing ground level	1	16-Nov-17	17-Nov-17	Mar-18																				
A28880	Excavate and lay 225 U-Channel Drain with Gully Trap	3	07-Nov-17	10-Nov-17	Feb-18*																				
A28890	Excavate trench and lay 150DN Pipe from Gully Trap to MH S	5	10-Nov-17	16-Nov-17	Feb-18																				
Storm Drain DN600 along Gridline E-G/14 (MH S2.12 to S2.11 to S2.10)																									
A28960	Backfill to existing ground level	3	21-Nov-17	23-Nov-17	Jan-18																				
Storm Drain DN600 along Gridline B-E/14 (MH S2.10 to S2.9c)																									
A29010	Backfill to existing ground level	3	04-Nov-17	07-Nov-17	Mar-18																				
A28980	Excavate to Formation Level	3	24-Oct-17	26-Oct-17	Jan-18																				
A28970	Excavate Trial Trench	3	20-Oct-17	23-Oct-17	Jan-18																				
A28990	Lay DN600 Pipe from MHS2.10 to S2.9c (Approx 30m)	3	27-Oct-17	31-Oct-17	Feb-18																				
A29000	Pressure Test	3	01-Nov-17	03-Nov-17	Mar-18																				
Storm Drain DN750 along Gridline A-B/14 (MH S2.9c to S2.9b to S2.9a)																									
A29070	Backfill to existing ground level	3	21-Dec-17	23-Dec-17	Apr-18																				
A29040	Construct Manhole S2.9b & S2.9c	14	24-Nov-17	09-Dec-17	Mar-18																				
A29030	Excavate to formation level	6	17-Nov-17	23-Nov-17	Mar-18																				
A29020	Excavate Trial Trench	3	14-Nov-17	16-Nov-17	Mar-18																				
A29050	Lay DN750 pipe from Manholes S2.9c to S2.9b to S2.9a (App	6	11-Dec-17	16-Dec-17	Apr-18																				
A29060	Pressure Test	3	18-Dec-17	20-Dec-17	Apr-18																				
Storm Drain DN450 suspended along Gridline J/I'-M/1																									
Storm Drain at Portion M12																									
A29150	Complete suspended Storm Drain at Portion M12 & Remove	0		27-Feb-18												Complete suspen									
A29155	Finish clear up @ M12	1	27-Feb-18	28-Feb-18	May-18																				
A29100	Install Brackets for Suspension Pipe	9	25-Jan-18	03-Feb-18	Mar-18																				
A29090	Install scaffolding @ M12	6	18-Jan-18	24-Jan-18	Feb-18*																				
A29130	Install suspended vertical Drainage DN100 - 5 nos	5	09-Feb-18	15-Feb-18	Apr-18																				
A29120	Install suspended vertical Rain Water Outlet DN150 - 4 nos	2	07-Feb-18	09-Feb-18	Mar-18																				
A29110	Lay horizontal suspended DN450 pipe (Approx. 120m)	6	05-Feb-18	10-Feb-18	Mar-18																				
A29140	Pressure Test	3	15-Feb-18	22-Feb-18	May-18																				
A29145	Removal of scaffolding @M12	4	22-Feb-18	27-Feb-18	May-18																				
Storm Drain DN350 suspended along Gridline M/1-4																									
Storm Drain at Portion M13																									
A29230	Complete suspended Storm Drain at Portion M13	0		02-Mar-18												Complete suspen									
A29160	External Wall @ Gridline M/1-4 (including Wall finish) - com	0		24-Jan-18																					
A29235	Finish clear up @ M13	1	02-Mar-18	03-Mar-18	May-18																				
A29180	Install Brackets for Suspension Pipe	9	01-Feb-18	10-Feb-18	Mar-18																				
A29170	Install scaffolding @ M13	6	25-Jan-18	31-Jan-18	Mar-18																				
A29210	Install suspended vertical Drainage Pipe DN100 - 2 nos	3	15-Feb-18	22-Feb-18	Apr-18																				
A29200	Install suspended vertical Rain Water Outlet DN150 - 2 nos	1	14-Feb-18	15-Feb-18	Apr-18																				
A29190	Lay suspended horizontal DN350 pipe (Approx. 50m)	6	12-Feb-18	21-Feb-18	Apr-18																				
A29220	Pressure Test	3	22-Feb-18	26-Feb-18	Apr-18																				
A29225	Removal of scaffolding @M13	4	26-Feb-18	02-Mar-18	Apr-18																				
Storm Drain DN250 suspended along Gridline M/4-12																									
Storm Drain at Portion M14																									
A29330	Complete suspended Storm Drain along Portion M14	0		10-Mar-18												Complete suspen									
A29240	Coordinate with Lyrics Contractor for temporary access to M	0	20-Oct-17		Feb-18*											Coordinate with Lyrics Contractor for temporary access to M14 (App-D1), 23-Feb-18*									
A29250	External Wall @ M14 Gridline M/4-12 (including Wall finish)	0		24-Jan-18												External Wall:@ M14 Gridline M/4-12 (including Wall finish) - complete,									
A29335	Finish clear up @ M13	1	12-Mar-18	12-Mar-18	May-18																				
A29270	Install Brackets for Suspension Pipe	5	12-Feb-18	20-Feb-18	Apr-18																				
A29260	Install scaffolding at M14	6	01-Feb-18	07-Feb-18	Mar-18																				
A29310	Install suspended vertical Drainage Pipe DN100 - 5 nos	5	24-Feb-18	02-Mar-18	Apr-18																				
A29290	Install suspended vertical Rain Water Outlet DN150 - 6 nos	3	24-Feb-18	28-Feb-18	Apr-18																				
A29300	Install suspended vertical Rain Water Outlet DN80- 2 nos	1	28-Feb-18	01-Mar-18	Apr-18																				
A29280	Lay suspended horizontal DN250 pipe (Approx. 105m)	8	22-Feb-18	02-Mar-18	Apr-18																				
A29320	Pressure Test	3	03-Mar-18	06-Mar-18	Apr-18																				
A29325	Removal of scaffolding @M14	4	07-Mar-18	10-Mar-18	Apr-18																				
Storm Drain DN600 at Portion M45																									
Storm Drain along Gridline D'-E'/1'-2' (MH WHC6_1c to S3.4)																									
A29380	Formation and Construct MH S3.4	8	20-Oct-17	30-Oct-17	Apr-18*																				

[illegible]

Activity ID	Activity Name	CMWP Dur.	CMWP - R0.D8 Start	CMWP -R0.D8 Finish	Actual / Forecast	February					March					April				May				
						21	28	04	11	18	25	04	11	18	25	01	08	15	22	29	06	13	20	27
Watermain	A30120	Watermain Final Connection	2	03-Nov-17	04-Nov-17	Mar-18																		
	ICP External - Grd Lvl - External Watermain Connection to PIW																							
	A30220	Backfill to Ground Level	6	11-Nov-17	17-Nov-17	Mar-18																		
	A30190	Lab Test	11	25-Oct-17	07-Nov-17	Feb-18																		
	A30170	Pressure Test	3	20-Oct-17	23-Oct-17	Feb-18*																		
	A30180	Swabbing Test	1	24-Oct-17	24-Oct-17	Feb-18																		
	A30200	Watermain Final Connection	3	08-Nov-17	10-Nov-17	Mar-18																		
	Power																							
	Power Cable 11kV at Footpath adjacent to Entrance Portal (Interface with PIW)																							
	A30280	Backfilling footway to adjacent ground level	3	08-Dec-17	11-Dec-17	Apr-18																		
A30260	Excavate trench in footway for the 11kV direct buried cables	14	20-Oct-17	06-Nov-17	Feb-18*																			
A30270	Lay Lead-in Cable (by CLP) & Inspection	27	07-Nov-17	07-Dec-17	Mar-18																			
Power Cable 11Kv at Gridline A / 1-3																								
A30310	Lay Lead-in Cable (by CLP) & connect to district-wide system	10	25-Oct-17	04-Nov-17	Feb-18																			
Power Cable 11Kv at Gridline A / 3-14																								
Construction at Drawpit E1 to Drawpit E2																								
A30330	Construct Drawpits E1 & E2	8	27-Nov-17	06-Dec-17	Dec-17																			
Construction at Drawpit E2 to E3 to E4																								
A30360	Construct Cable Tunnel from Drawpits E2 to E4 & Install Cab	8	08-Jan-18	17-Jan-18	Dec-17																			
A30350	Construct Drawpit E3 & E4	8	28-Dec-17	08-Jan-18	Dec-17																			
Construction at Drawpit E4 to E5																								
A30380	Construct Cable Trench & Install Cable Ducts (Approx 6m)	2	22-Jan-18	24-Jan-18	Mar-18																			
A30370	Construct Drawpit E5	4	17-Jan-18	22-Jan-18	Feb-18																			
Inspection & Testing																								
A30390	Test & Inspection	27	24-Jan-18	28-Feb-18	Mar-18																			
Power Cable 11Kv at Gridline A-C / 14																								
A30400	Construct Cable Trench & Install Cable Ducts (Approx 43m)	8	20-Oct-17	30-Oct-17	Nov-17																			
A30410	Tests & inspection	1	31-Oct-17	31-Oct-17	Mar-18																			
Power Cable 11kv at Gridline C-M / 14																								
A30420	Construct Drawpits E6 & E7	8	28-Feb-18	09-Mar-18	Feb-18																			
A30430	Construct Cable Trench / Tunnel & Install Cable Ducts (Approx 43m)	11	09-Mar-18	22-Mar-18	Feb-18																			
A30440	Tests & inspection	3	22-Mar-18	26-Mar-18	Mar-18																			
Power Cable 11Kv at Gridline 13-14 / M																								
A30460	Construct Cable Trench / Tunnel & Install Cable Ducts (Approx 43m)	4	06-Apr-18	11-Apr-18	Mar-18																			
A30450	Construct Draw pit E8	6	26-Mar-18	06-Apr-18	Mar-18																			
A30470	Lay power lead-in (by CLP) & Inspection	20	11-Apr-18	01-May-18	Feb-18																			
LV Power from DCS to M+ Seawater Pump Cells																								
A30520	Backfill to Existing Ground Level	4	28-Apr-18	04-May-18	Mar-18																			
A30500	Cable Pulling from DCS to Seawater Pump Cells	5	23-Apr-18	28-Apr-18	Mar-18																			
A30510	Construct 6 Nos of Drawpit	16	03-Apr-18	23-Apr-18	Feb-18																			
A30490	Construct Cable Trench & Lay 4Nos of DN150 & 5Nos of DN	11	03-Apr-18	17-Apr-18	Feb-18																			
A30480	Excavate trench & Install Shoring from DCS to M+ Seawater I	4	26-Mar-18	03-Apr-18	Feb-18																			
ICP External Power Cable Trench For CLP Lead In																								
A30550	Backfill to Ground Level	3	25-Nov-17	28-Nov-17	Jan-18																			
A30530	Construct 2 Nos of Drawpit at the ICP Entrance	8	20-Oct-17	30-Oct-17	Jan-18																			
A30545	Lay power Lead-in for ICP & Inspection (by CLP)	15	09-Nov-17	24-Nov-17	Feb-18																			
Gas																								
Gas Main at Portion M01																								
Gas Main RDE connection along Gridline E' - F' / 1'																								
A30740	Backfill Trench to Ground Level	4	16-Dec-17	20-Dec-17	May-18																			
A30720	Excavate Trench for Main Gas 100mm and install shoring	8	22-Nov-17	30-Nov-17	Apr-18																			
A30710	Install support for existing Underground Utilities	6	15-Nov-17	21-Nov-17	Apr-18																			
A30730	Lay down Main Gas 100mm (by Towngas Specialist Contract	13	01-Dec-17	15-Dec-17	Apr-18																			
A30750	Testing and Inspection	5	21-Dec-17	28-Dec-17	May-18																			
A30700	Trial Trench for Underground Utilities	9	04-Nov-17	14-Nov-17	Mar-18																			
Gas Main M+ along Gridline 2-9/A																								
A30790	Backfill trench at M+ to adjacent level	6	20-Feb-18	26-Feb-18	Jan-18																			
A30770	Construct and Lay down 350x350mm concrete pipe bench	11	05-Jan-18	17-Jan-18	Feb-18																			
A30760	Excavate Trench for Main Gas and install shoring	11	28-Dec-17	11-Jan-18	Jan-18																			
A30780	Lay down and install DN100 gas main (by Towngas Specialist	25	18-Jan-18	15-Feb-18	Jan-18																			
A30800	Testing and Inspection	4	27-Feb-18	02-Mar-18	Mar-18																			
Telecom/ICT/FTNS																								
Telecom @ Gridline C-M/14																								

[illegible]

Three Months Rolling Programme (3MRP) - Mth 29 - 28 February 2018



[illegible]

Lyric Theatre Complex

Activity ID	Activity Name	Start Date	Finish Date	2018			
				Feb	Mar	Apr	May
				2	3	4	5
L1 Contract for Lyric Theatre Complex (3MRP)							
Cost Centre B - Excavation and Lateral Support (ELS) Stage 2							
Preliminaries and Monitoring							
CB162220	Construct AISO Office Extension	01-Mar-18	30-May-18				
Marine Transport Proposal							
CB120400	Set Up Barge Facility for Marine Transportation	06-Apr-18	04-May-18				
King Posts (For Platform & ELS Works)							
CB130700	Drilling for King Posts - Rig 1 (31 nr)	08-Jan-18 A	28-Feb-18 A				
CB130750	Drilling for King Posts - Rig 2 (31 nr)	11-Jan-18 A	28-Feb-18 A				
CB130800	Drilling for King Posts - Rig 3 (30 nr)	15-Jan-18 A	28-Feb-18 A				
CB130810	Install King Posts & Grout (92 nr)	11-Jan-18 A	10-Mar-18				
Temporary Steel Platform							
CB140200	Erect Decking of Temporary Steel Platform	08-May-18	19-Jul-18				
Excavation and ELS Works (Stage 2)							
CB160200	PIW1 Complete Diversion of Existing KGO Cooling Main (by Others)		31-Mar-18*				
CB160400	[South Portion] Excavate to +3.0mPD & Install 1st Layer of Strut	08-May-18	12-Jun-18				
CB161300	[North Portion] Excavate to +3.0mPD & Install 1st Layer of Strut	26-May-18	05-Jul-18				



Project ID: L13MRP-20180228

Layout: L1-3MRP (Env)

Page: 1 of 1

West Kowloon Cultural District Authority
 L1 Contract for Lyric Theatre Complex & Extended Basement
 Three Month Rolling Programme (3MRP) - Status as of 28 Feb 2018

